



The Croft, Liscombe Park, LU7 0GU

£375,000



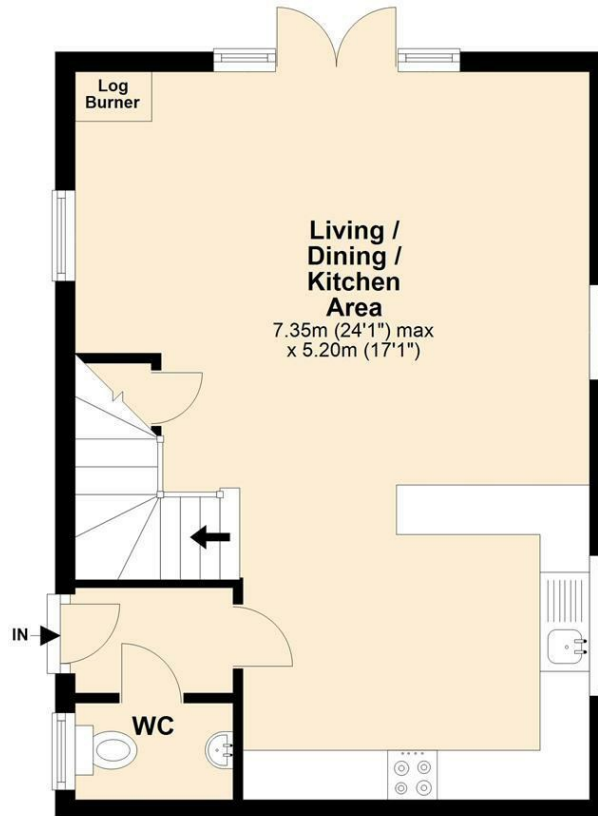
- **Stunning Two Double Bedroom House**
- **High Specification Throughout**
- **Air Source Heat Pump with Underfloor Heating**
- **Two En-Suites**
- **Two Allocated Parking Spaces**
- **Countryside Location of Liscombe Park**
- **24Ft Triple Aspect Living Area**
- **Striking Herringbone Oak Flooring**
- **Dressing Area in Master Bedroom**
- **Quality Fitted Kitchen with Breakfast Seating**



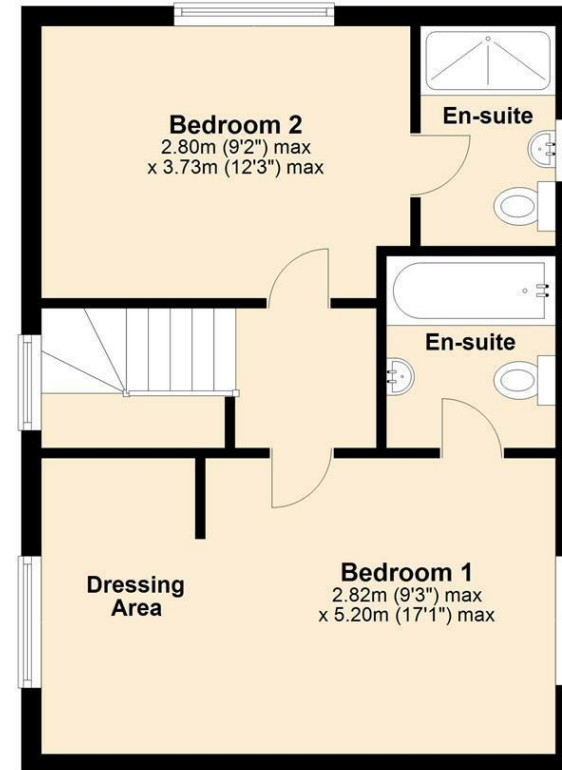


Floor Plan

Ground Floor



First Floor



Viewing

Please contact our Leighton Buzzard Office on 01525 377733.

If you wish to arrange a viewing appointment for this property or require further information.

IMPORTANT: Whilst we aim to make our details accurate and reliable, if there is any point of particular concern to you, please contact the office. The apparatus, equipment, fittings and services have not been checked and therefore it is in the purchaser's interest to establish the working condition of the appliance included. Personal items such as furnishings which may be shown in the photographs are not included in the asking price. No survey has been carried out by M & M Properties. Measurements have a tolerance of +/- 3". Please note that this floorplan has not been drawn to scale and is therefore for room layout purposes only. It does not constitute or form part of a contract. Doors may be hung in opposite directions.